

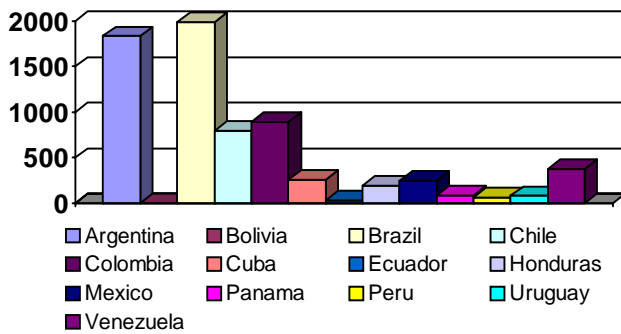


## SUPERVISIONS WITHIN THE OPERATIONAL FRAMEWORK OF THE VIÑA DEL MAR (2007)

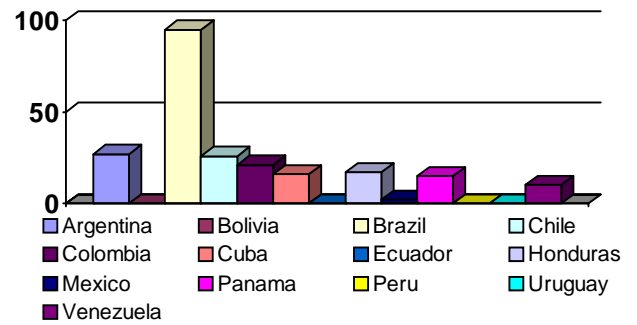
### Inspections sorted by Port State

Port State	Inspections	Detentions	Ratio
Argentina	1833	27	1.47%
Bolivia	0	0	0.00%
Brazil	1986	95	4.78%
Chile	793	26	3.28%
Colombia	894	21	2.35%
Cuba	261	16	6.13%
Ecuador	32	0	0.00%
Honduras	193	17	8.81%
Mexico	248	2	0.81%
Panama	91	15	16.48%
Peru	69	0	0.00%
Uruguay	82	0	0.00%
Venezuela	374	10	2.67%
<b>Total</b>	<b>6856</b>	<b>229</b>	<b>3.34%</b>

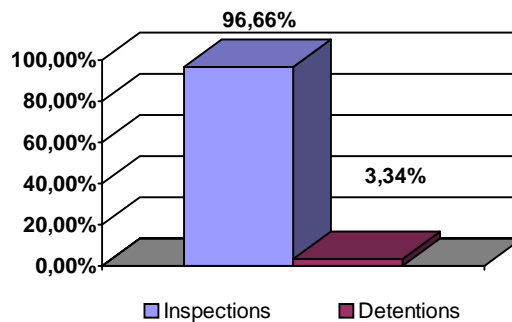
### Inspections



### Detentions



### Ratio of Detentions





### Inspections sorted by Ship's Flag

Ship's Flag	Port State													Total
	ARG	BOL	BRA	CHI	COL	CUB	ECU	HON	MEX	PAN	PER	URU	VEN	
Afghanistan	1	0	7	0	7	0	0	0	0	1	0	0	0	16
Germany	13	0	31	28	9	0	0	4	2	1	2	0	3	93
Antigua and Barbuda	57	0	46	48	59	16	0	15	18	12	7	0	26	304
Nederland Antilles	0	0	5	4	13	10	0	0	0	0	0	0	3	35
Bahamas	108	0	107	76	59	1	9	16	20	3	2	8	35	444
Barbados	4	0	5	1	1	0	1	1	2	0	0	0	1	16
Belize	2	0	13	0	1	3	0	1	0	0	0	1	1	22
Bermudas	1	0	9	3	4	0	0	1	0	0	1	0	0	19
Brazil	46	0	0	0	2	0	0	0	0	0	0	3	0	51
Bulgaria	17	0	25	2	1	3	0	0	1	0	0	0	2	51
Chile	11	0	2	0	2	0	0	1	2	0	0	0	1	19
China	15	0	24	2	10	10	0	6	6	1	3	0	3	80
Cyprus	90	0	130	37	37	27	1	8	10	3	2	8	29	382
Croatia	4	0	4	2	3	0	0	0	1	1	0	0	2	17
Denmark	8	0	13	15	2	0	1	0	1	6	0	0	2	48
U.S.A	4	0	1	7	6	0	0	4	1	0	0	0	0	23
Russian Federation	10	0	14	7	0	0	0	0	0	0	0	0	0	31
Philippines	18	0	34	13	10	0	1	2	3	0	1	3	2	87
Georgia	5	0	9	0	2	3	0	0	0	0	0	0	0	19
Gibraltar	5	0	9	4	2	0	0	0	3	1	0	0	4	28
Greece	78	0	85	8	35	1	0	3	10	0	4	3	6	233
Hong Kong, China	65	0	99	18	32	8	1	1	17	0	3	3	7	254
India	12	0	4	2	3	0	0	0	0	0	1	0	2	24
Isle of Man	16	0	14	2	11	2	0	4	0	2	1	1	3	56
Cayman Islands	14	0	13	6	2	0	1	0	1	1	0	0	0	38
Marshall Islands	84	0	82	33	35	8	0	12	5	8	1	7	22	297
Italy	26	0	25	2	8	5	0	1	0	2	0	0	2	71
Liberia	182	0	214	124	104	26	4	24	29	10	12	5	50	784
Lithuania	4	0	2	0	6	3	0	5	2	0	0	0	0	22
Malta	184	0	145	52	36	21	5	5	14	1	6	7	13	489
Norway	43	0	59	12	16	2	0	6	4	2	0	6	4	154
Nederland	3	0	18	8	8	2	1	8	3	0	0	0	6	57
Panama	484	0	440	167	227	65	2	38	65	0	13	17	80	1598
United Kingdom	19	0	21	15	13	4	0	2	1	11	0	0	4	90
Republic of Korea	14	0	18	11	5	1	0	2	5	0	2	1	0	59
People's Democratic Republic of Korea	3	0	13	5	1	0	0	0	0	0	0	0	0	22
Saint Vincent and the Grenadines	38	0	29	6	14	10	3	0	1	0	4	0	5	110
Singapore	34	0	68	18	27	0	0	3	9	6	1	1	12	179
Switzerland	7	0	5	3	0	1	0	0	0	0	1	2	2	21
Thailand	8	0	14	12	17	1	1	4	2	0	1	0	11	71
Turkey	17	0	17	4	6	0	0	4	2	1	0	0	2	53
Ukraine	0	0	9	3	5	2	0	0	0	0	0	0	0	19
Vanuatu	4	0	5	3	3	0	0	3	1	5	0	2	1	27
Venezuela	0	0	0	2	14	0	0	1	1	2	0	0	3	23
Vietnam	19	0	6	0	0	11	0	0	1	0	0	0	0	37
Others	56	0	93	28	36	15	1	8	5	11	1	4	25	283
<b>Total</b>	<b>1833</b>	<b>0</b>	<b>1986</b>	<b>793</b>	<b>894</b>	<b>261</b>	<b>32</b>	<b>193</b>	<b>248</b>	<b>91</b>	<b>69</b>	<b>82</b>	<b>374</b>	<b>6856</b>

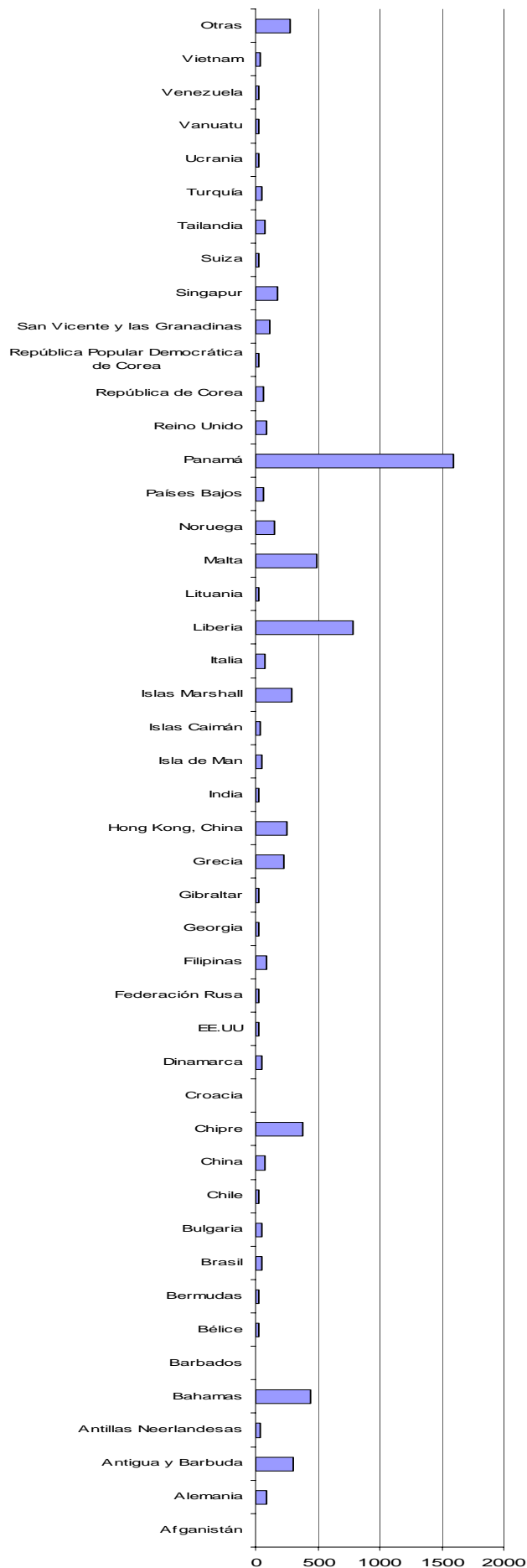


**Detained Ships sorted by Flag**

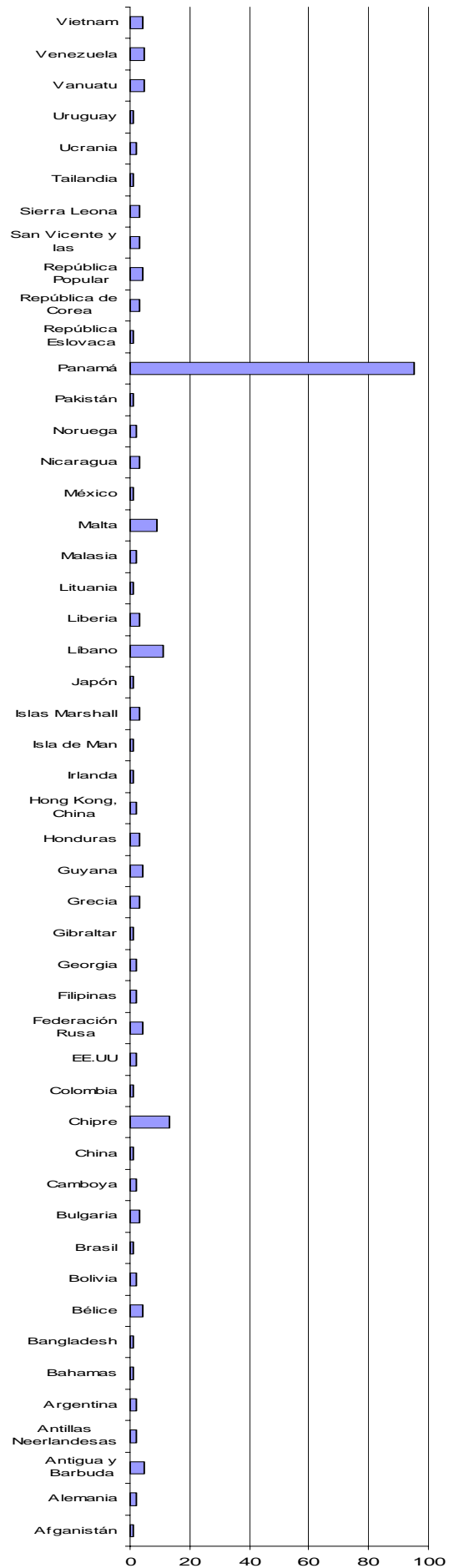
Ship's Flag	Port State													Total
	ARG	BOL	BRA	CHI	COL	CUB	ECU	HON	MEX	PAN	PER	URU	VEN	
Afghanistan	0	0	1	0	0	0	0	0	0	0	0	0	0	1
Germany	0	0	0	0	0	0	0	1	1	0	0	0	0	2
Antigua and Barbuda	0	0	3	1	0	0	0	0	0	1	0	0	0	5
Nederland Antilles	0	0	0	0	1	1	0	0	0	0	0	0	0	2
Argentina	0	0	2	0	0	0	0	0	0	0	0	0	0	2
Bahamas	0	0	1	0	0	0	0	0	0	0	0	0	0	1
Bangladesh	0	0	1	0	0	0	0	0	0	0	0	0	0	1
Belize	0	0	4	0	0	0	0	0	0	0	0	0	0	4
Bolivia	0	0	0	0	0	2	0	0	0	0	0	0	0	2
Brazil	1	0	0	0	0	0	0	0	0	0	0	0	0	1
Bulgaria	1	0	2	0	0	0	0	0	0	0	0	0	0	3
Cambodia	0	0	2	0	0	0	0	0	0	0	0	0	0	2
China	0	0	1	0	0	0	0	0	0	0	0	0	0	1
Cyprus	1	0	9	1	0	2	0	0	0	0	0	0	0	13
Colombia	0	0	0	1	0	0	0	0	0	0	0	0	0	1
U.S.A	0	0	0	0	1	0	0	1	0	0	0	0	0	2
Russian Federation	1	0	0	3	0	0	0	0	0	0	0	0	0	4
Philippines	0	0	2	0	0	0	0	0	0	0	0	0	0	2
Georgia	0	0	2	0	0	0	0	0	0	0	0	0	0	2
Gibraltar	0	0	0	1	0	0	0	0	0	0	0	0	0	1
Greece	1	0	2	0	0	0	0	0	0	0	0	0	0	3
Guyana	0	0	2	0	1	0	0	0	0	0	0	0	1	4
Honduras	0	0	0	0	0	0	0	0	0	2	0	0	1	3
Hong Kong, China	0	0	2	0	0	0	0	0	0	0	0	0	0	2
Ireland	0	0	0	0	1	0	0	0	0	0	0	0	0	1
Isle of Man	0	0	0	0	0	0	0	1	0	0	0	0	0	1
Marshall Islands	1	0	0	1	0	0	0	1	0	0	0	0	0	3
Japan	0	0	0	1	0	0	0	0	0	0	0	0	0	1
Lebanon	0	0	11	0	0	0	0	0	0	0	0	0	0	11
Liberia	1	0	0	0	0	0	0	1	0	1	0	0	0	3
Lithuania	0	0	1	0	0	0	0	0	0	0	0	0	0	1
Malaysia	0	0	0	0	0	0	0	0	0	0	0	0	2	2
Malta	0	0	6	1	0	1	0	1	0	0	0	0	0	9
Mexico	0	0	0	0	0	0	0	1	0	0	0	0	0	1
Nicaragua	0	0	0	0	0	0	0	0	0	3	0	0	0	3
Norway	0	0	0	0	0	0	0	1	0	1	0	0	0	2
Pakistan	0	0	1	0	0	0	0	0	0	0	0	0	0	1
Panama	16	0	35	8	14	8	0	6	1	0	0	0	5	93
Republic of Slovakia	0	0	0	1	0	0	0	0	0	0	0	0	0	1
Republic of Korea	0	0	0	2	0	0	0	1	0	0	0	0	0	3
People's Democratic Republic of Korea	0	0	2	2	0	0	0	0	0	0	0	0	0	4
Saint Vincent and the Grenadines	0	0	0	0	0	2	0	0	0	0	0	0	1	3
Sierra Leone	0	0	0	0	1	0	0	0	0	2	0	0	0	3
Thailand	0	0	1	0	0	0	0	0	0	0	0	0	0	1
Ukraine	0	0	0	1	1	0	0	0	0	0	0	0	0	2
Uruguay	1	0	0	0	0	0	0	0	0	0	0	0	0	1
Vanuatu	0	0	0	0	0	0	0	1	0	4	0	0	0	5
Venezuela	0	0	0	2	1	0	0	1	0	1	0	0	0	5
Vietnam	2	0	2	0	0	0	0	0	0	0	0	0	0	4
<b>Total</b>	<b>27</b>	<b>0</b>	<b>95</b>	<b>26</b>	<b>21</b>	<b>16</b>	<b>0</b>	<b>17</b>	<b>2</b>	<b>15</b>	<b>0</b>	<b>0</b>	<b>10</b>	<b>229</b>



### INSPECTED SHIPS SORTED BY FLAG



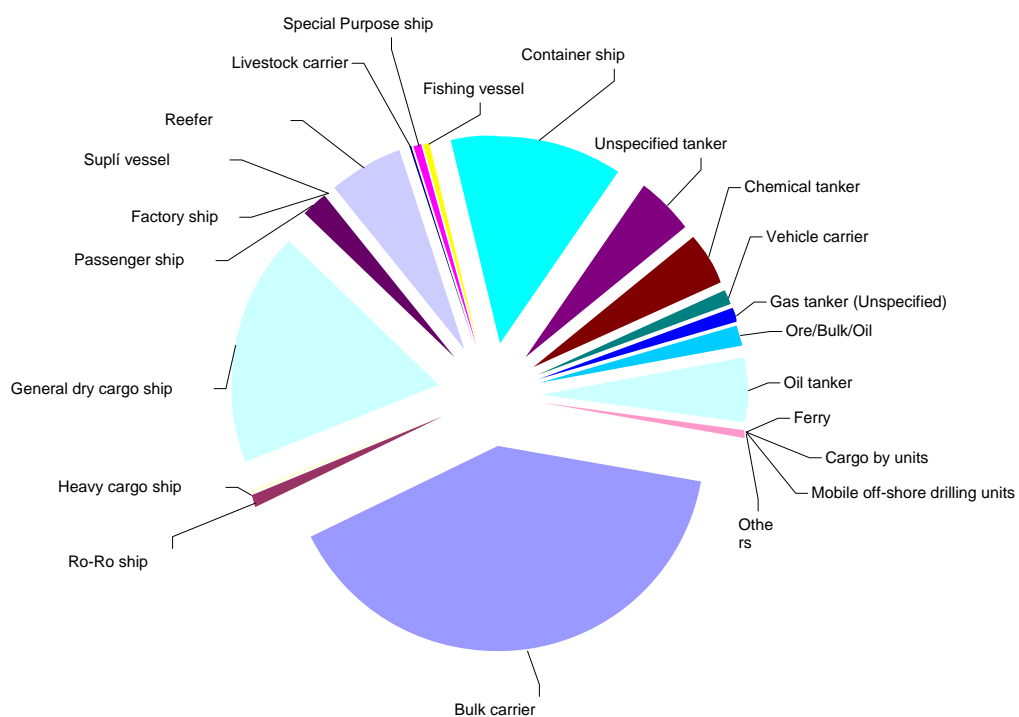
### DETAINED SHIPS BY FLAG





**Inspected Ships sorted by Type**

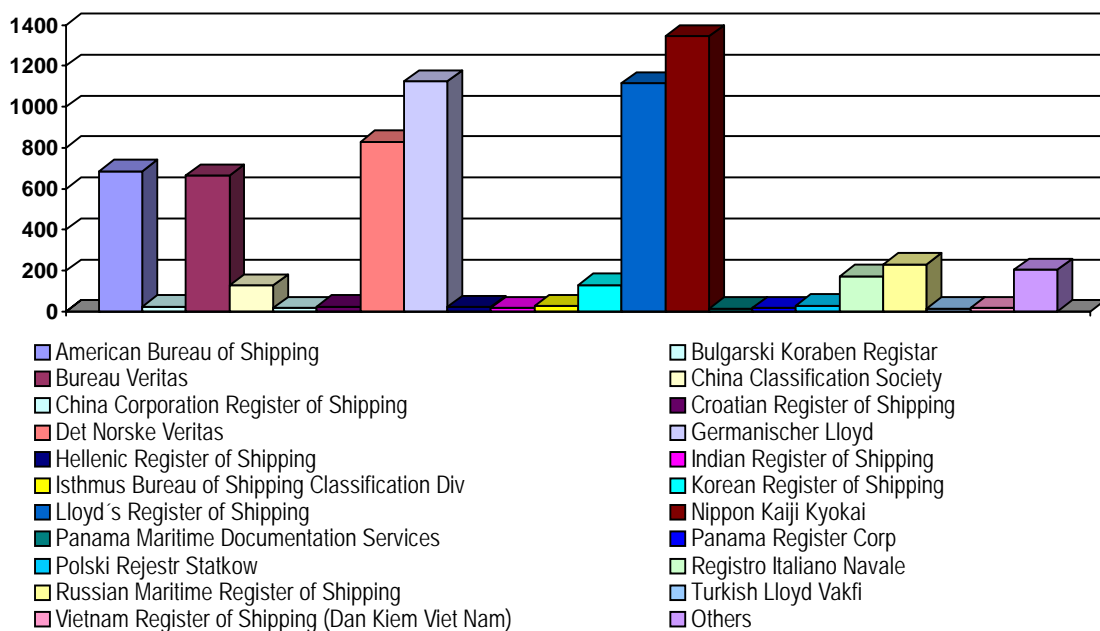
Type of Ship	Port State													Total
	ARG	BOL	BRA	CHI	COL	CUB	ECU	HON	MEX	PAN	PER	URU	VEN	
Bulk Carrier	921	0	918	179	277	72	1	44	120	3	40	49	118	2742
RO-RO Ship	9	0	1	6	15	7	0	18	2	3	0	0	3	64
Heavy Cargo	0	0	7	2	1	0	0	1	2	0	0	0	3	16
General Dry Cargo	207	0	433	124	183	82	3	46	63	10	7	6	82	1246
Passengers	24	0	26	37	24	2	0	0	12	0	0	0	10	135
Supply	0	0	0	4	6	1	0	0	0	0	0	0	1	12
Factory	0	0	0	3	0	0	0	0	0	0	0	0	0	3
Reefer	97	0	88	122	37	21	22	4	0	0	1	3	2	397
Livestock Carrier	0	0	4	0	0	0	0	0	0	0	0	1	1	6
Special Purpose	1	0	18	12	5	2	0	1	0	0	0	0	0	39
Fishing	0	0	0	7	15	0	1	0	0	11	0	2	2	38
Container Ship	134	0	229	192	135	27	2	46	9	53	13	4	82	926
Unspecified Tanker	155	0	56	12	36	7	1	4	3	1	3	5	15	298
Chemical Tanker	128	0	46	38	36	8	0	8	7	1	0	0	5	277
Vehicle Carrier	26	0	3	15	14	0	0	3	13	2	1	0	18	95
Gas Tanker (unspecified)	13	0	15	5	12	10	2	4	2	0	0	3	1	67
Ore / bulk/ oil	16	0	55	1	10	4	0	0	9	0	1	2	9	107
Oil Tanker	88	0	80	34	69	18	0	11	6	6	3	6	21	342
Ferry	0	0	2	0	2	0	0	2	0	0	0	0	1	7
MODU's	1	0	0	0	0	0	0	0	0	0	0	0	0	1
Cargo by Units	0	0	0	0	6	0	0	0	0	0	0	0	0	6
Unspecified	13	0	5	0	11	0	0	1	0	1	0	1	0	32
<b>Total</b>	<b>1833</b>	<b>0</b>	<b>1986</b>	<b>793</b>	<b>894</b>	<b>261</b>	<b>32</b>	<b>193</b>	<b>248</b>	<b>91</b>	<b>69</b>	<b>82</b>	<b>374</b>	<b>6856</b>





**Inspected Ships sorted by Classification Society**

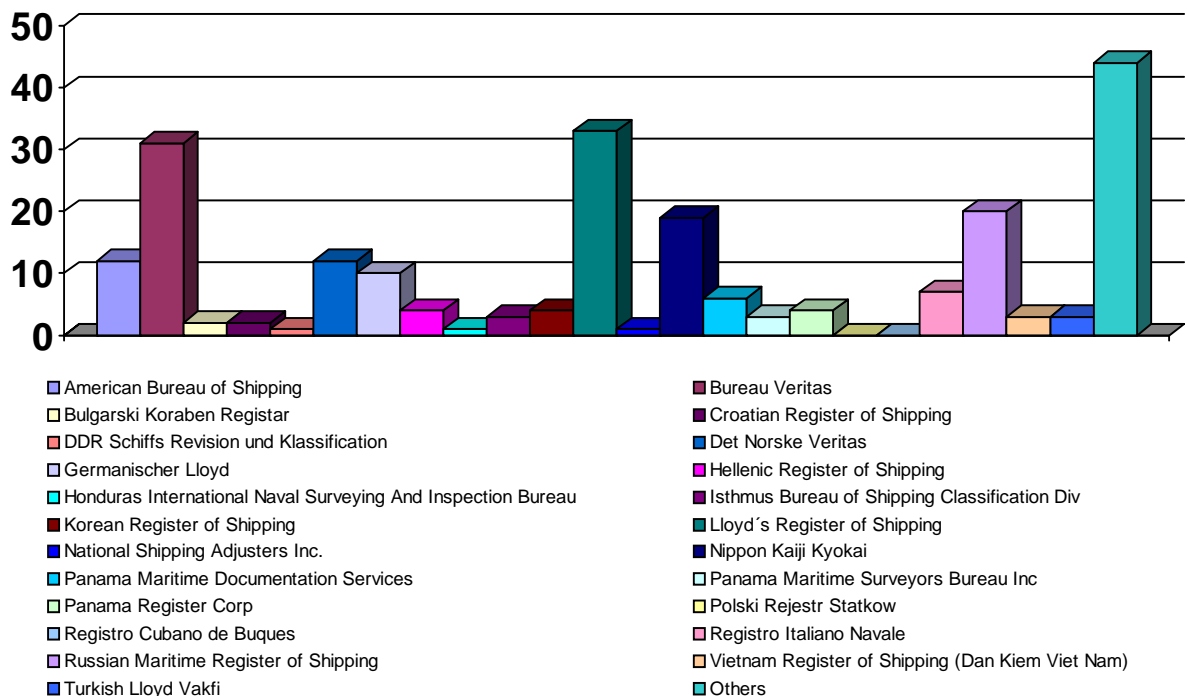
Classification Society	Port State													Total
	ARG	BOL	BRA	CHI	COL	CUB	ECU	HON	MEX	PAN	PER	URU	VEN	
American Bureau of Shipping	197	0	218	56	85	17	4	18	27	8	9	11	35	685
Bulgarski Koraben Registrar	10	0	14	0	0	1	0	0	0	0	0	0	0	25
Bureau Veritas	185	0	214	55	95	37	8	10	15	8	2	6	29	664
China Classification Society	37	0	43	1	9	10	0	6	10	0	5	1	5	127
China Corporation Register of Shipping	1	0	6	0	3	0	0	0	0	2	0	0	5	17
Croatian Register of Shipping	3	0	9	3	3	0	0	0	3	1	0	0	3	25
Det Norske Veritas	222	0	257	138	84	12	1	22	31	4	7	17	34	829
Germanischer Lloyd	180	0	279	216	184	39	3	49	35	29	13	3	93	1123
Hellenic Register of Shipping	15	0	3	0	0	2	0	0	2	0	0	0	0	22
Indian Register of Shipping	8	0	4	0	2	1	0	0	0	0	1	0	2	18
Isthmus Bureau of Shipping Classification Div	0	0	0	0	15	8	0	3	1	0	0	0	1	28
Korean Register of Shipping	33	0	42	20	16	5	0	2	7	0	2	1	2	130
Lloyd's Register of Shipping	315	0	357	96	111	49	7	39	39	21	9	15	56	1114
Nippon Kaiji Kyokai	437	0	320	155	188	33	3	29	66	3	16	21	74	1345
Panama Maritime Documentation Services	0	0	3	0	7	1	0	0	1	0	0	0	3	15
Panama Register Corp	4	0	7	1	0	3	0	0	1	0	0	0	1	17
Polski Rejestr Statkow	8	0	6	0	4	2	0	3	2	0	0	1	4	30
Registro Italiano Navale	71	0	53	13	15	7	0	3	2	2	1	0	6	173
Russian Maritime Register of Shipping	68	0	95	24	14	9	5	2	3	0	3	2	5	230
Turkish Lloyd Vakfi	7	0	7	2	0	0	0	0	0	0	0	0	0	16
Vietnam Register of Shipping (Dan Kiem Viet Nam)	12	0	3	0	0	4	0	0	0	0	0	0	0	19
Others	20	0	46	13	59	21	1	7	3	13	1	4	16	204
<b>Total</b>	<b>1833</b>	<b>0</b>	<b>1986</b>	<b>793</b>	<b>894</b>	<b>261</b>	<b>32</b>	<b>193</b>	<b>248</b>	<b>91</b>	<b>69</b>	<b>82</b>	<b>374</b>	<b>6856</b>





### Detentions sorted by Classification Society

Classification Society	Port State													Total
	ARG	BOL	BRA	CHI	COL	CUB	ECU	HON	MEX	PAN	PER	URU	VEN	
American Bureau of Shipping	1	0	9	0	0	0	0	1	0	1	0	0	0	12
Bureau Veritas	6	0	17	2	0	4	0	0	0	2	0	0	0	31
Bulgarski Koraben Registrar	0	0	2	0	0	0	0	0	0	0	0	0	0	2
Croatian Register of Shipping	0	0	2	0	0	0	0	0	0	0	0	0	0	2
DDR Schiffs Revision und Klassifikation	0	0	0	0	1	0	0	0	0	0	0	0	0	1
Det Norske Veritas	1	0	8	1	0	0	0	2	0	0	0	0	0	12
Germanischer Lloyd	2	0	1	2	1	0	0	1	1	2	0	0	0	10
Hellenic Register of Shipping	1	0	2	0	0	0	0	0	1	0	0	0	0	4
Honduras International Naval Surveying And Inspection Bureau	0	0	0	0	0	0	0	0	0	1	0	0	0	1
Isthmus Bureau of Shipping Classification Div	0	0	0	0	1	1	0	1	0	0	0	0	0	3
Korean Register of Shipping	1	0	0	2	0	0	0	1	0	0	0	0	0	4
Lloyd's Register of Shipping	4	0	17	2	0	4	0	6	0	0	0	0	0	33
National Shipping Adjusters Inc.	0	0	0	0	0	0	0	0	0	1	0	0	0	1
Nippon Kaiji Kyokai	6	0	3	6	0	0	0	2	0	0	0	0	2	19
Panama Maritime Documentation Services	0	0	1	0	3	1	0	0	0	0	0	0	1	6
Panama Maritime Surveyors Bureau Inc	0	0	0	0	1	0	0	0	0	0	0	0	2	3
Panama Register Corp	0	0	3	0	0	0	0	0	0	0	0	0	1	4
Polski Rejestr Statkow	0	0	0	0	0	0	0	0	0	0	0	0	0	0
Registro Cubano de Buques	0	0	0	0	0	0	0	0	0	0	0	0	0	0
Registro Italiano Navale	1	0	5	0	1	0	0	0	0	0	0	0	0	7
Russian Maritime Register of Shipping	3	0	10	6	1	0	0	0	0	0	0	0	0	20
Vietnam Register of Shipping (Dan Kiem Viet Nam)	1	0	2	0	0	0	0	0	0	0	0	0	0	3
Turkish Lloyd Vakfi	0	0	3	0	0	0	0	0	0	0	0	0	0	3
Others	0	0	10	5	12	6	0	3	0	8	0	0	4	4
<b>Total</b>	<b>27</b>	<b>0</b>	<b>95</b>	<b>26</b>	<b>21</b>	<b>16</b>	<b>0</b>	<b>17</b>	<b>2</b>	<b>15</b>	<b>0</b>	<b>0</b>	<b>10</b>	<b>229</b>

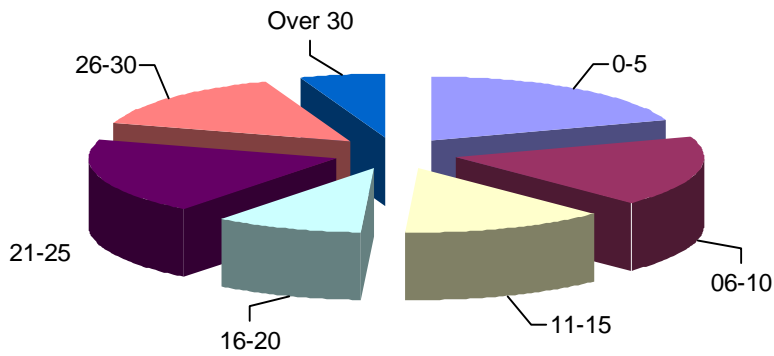




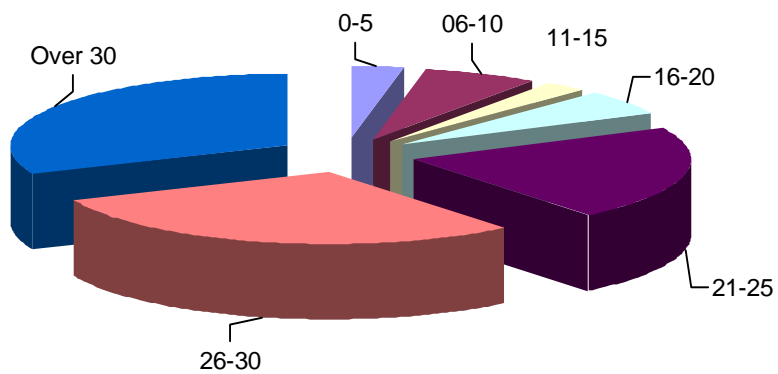
### Inspected Ships sorted by Age

Age (in years)	Inspections	Detentions	Ratio
0-5	1354	7	0.52%
6-10	1223	15	1.23%
11-15	906	6	0.66%
16-20	678	13	1.92%
21-25	1311	49	3.74%
26-30	1000	67	6.70%
Over 30	384	72	18.75%
<b>Total</b>	<b>6856</b>	<b>229</b>	<b>3,35%</b>

### Inspections sorted by Age of Ships



### Detentions sorted by Age of Ships





**Inspected Ships sorted by Age and Flag**

Flag	Age (in years)						Total
	0-5	6-10	11-15	16-20	21-25	Over 26	
Afghanistan	5	4	1	1	0	5	16
Germany	26	53	9	5	0	0	93
Antigua and Barbuda	78	135	76	7	8	1	305
Nederland Antilles	1	13	3	6	11	1	35
Bahamas	78	48	61	80	90	87	444
Belize	0	2	5	2	12	1	22
Bermudas	2	5	5	3	2	2	19
Brazil	0	0	10	10	21	10	51
Bulgaria	2	8	1	0	16	24	51
Chile	1	0	1	3	6	8	19
China	13	19	14	13	13	8	80
Cyprus	79	70	41	28	77	86	381
Croatia	7	1	4	1	3	1	17
Denmark	12	14	1	19	1	1	48
U.S.A	2	4	3	4	2	8	23
Russian Federation	0	0	2	1	20	8	31
Philippines	11	10	17	14	34	1	87
France	4	3	4	0	1	2	14
Georgia	0	0	0	0	5	14	19
Gibraltar	4	8	9	1	5	0	27
Greece	52	44	37	19	43	38	233
Hong Kong, China	87	71	32	12	21	31	254
India	5	3	0	1	13	2	24
Iran	0	5	0	0	8	2	15
Isle of Man	11	27	16	0	2	0	56
Cayman Islands	3	9	5	1	9	11	38
Cook Islands	0	0	0	1	1	9	11
Marshall Islands	101	84	38	24	33	17	297
Italy	27	20	12	7	2	3	71
Lebanon	0	0	0	0	0	12	12
Liberia	196	164	99	104	138	83	784
Lithuania	1	4	9	2	6	0	22
Malta	63	68	57	68	130	103	489
Norway	6	24	26	24	43	31	154
Nederland	7	18	11	8	13	0	57
Panama	314	185	186	124	310	479	1598
United Kingdom	48	10	9	11	4	8	90
Republic of Korea	0	4	12	15	20	8	59
People's Democratic Republic of Korea	0	0	3	0	3	16	22
Saint Vin. and Grenadines	4	3	0	0	37	66	110
Singapore	68	24	32	20	29	6	179
Switzerland	12	8	1	0	0	0	21
Thailand	0	3	23	7	35	3	71
Turkey	7	6	4	2	19	15	53
Ukraine	0	0	0	0	3	16	19
Vanuatu	1	7	1	3	1	14	27
Venezuela	0	0	0	3	1	19	23
Vietnam	1	6	9	5	9	7	37
Others	15	29	17	19	51	117	248
<b>Total</b>	<b>1354</b>	<b>1223</b>	<b>906</b>	<b>678</b>	<b>1311</b>	<b>1384</b>	<b>6856</b>

**Detained ships sorted by age and flag**

Flag	Age (in years)						Total
	0-5	6-10	11-15	16-20	21-25	+ de 26	
Afghanistan	0	0	0	0	0	1	1
Germany	1	1	0	0	0	0	2
Antigua and Barbuda	0	3	0	0	3	0	6
Nederland Antilles	0	1	0	0	1	0	2
Argentina	0	0	0	1	0	1	2
Bahamas	0	0	0	0	1	0	1
Bangladesh	0	0	0	0	0	1	1
Belize	0	0	0	0	4	0	4
Bolivia	0	0	0	0	0	2	2
Brazil	0	0	0	0	1	0	1
Bulgaria	0	0	0	0	3	0	3
Cambodia	0	0	0	0	0	2	2
China	0	0	0	0	0	1	1
Cyprus	2	0	0	1	2	9	14
Colombia	0	0	0	0	0	1	1
U.S.A	0	0	0	0	0	2	2
Russian Federation	0	0	0	0	3	1	4
Philippines	0	0	0	1	1	0	2
Georgia	0	0	0	0	2	0	2
Greece	0	0	0	1	0	2	3
Guyana	0	0	0	0	0	4	4
Honduras	0	0	0	0	0	3	3
Hong Kong, China	0	0	0	0	0	2	2
Ireland	0	0	0	0	0	1	1
Isle of Man	0	1	0	0	0	0	1
Marshall Islands	1	1	0	0	1	0	3
Japan	0	0	0	0	0	1	1
Lebanon	0	0	0	0	0	11	11
Liberia	0	1	0	1	1	0	3
Lithuania	0	0	0	0	1	0	1
Malaysia	0	0	0	0	0	2	2
Malta	0	1	0	0	3	5	9
Mexico	0	0	0	0	0	1	1
Nicaragua	0	0	0	0	1	2	3
Norway	0	0	0	1	0	1	2
Pakistan	0	0	0	0	0	1	1
Panama	3	5	5	7	15	58	93
Republic of Slovakia	0	0	0	0	1	0	1
Republic of Korea	0	1	0	0	2	0	3
People's Democratic Republic of Korea	0	0	0	0	0	4	4
Saint Vin. And Grenadines	0	0	0	0	2	1	3
Sierra Leone	0	0	0	0	0	3	3
Thailand	0	0	0	0	1	0	1
Ukraine	0	0	0	0	0	2	2
Uruguay	0	0	0	0	0	1	1
Vanuatu	0	0	0	0	0	5	5
Venezuela	0	0	0	0	0	5	5
Vietnam	0	0	1	0	0	3	4
<b>Total</b>	<b>7</b>	<b>15</b>	<b>6</b>	<b>13</b>	<b>49</b>	<b>139</b>	<b>229</b>



### Inspected Ships sorted by Age and Type

Type	Age (in years)						Total
	0-5	6-10	11-15	16-20	21-25	Over 26	
Bulk Carrier	550	483	398	207	636	468	2742
RO-RO Ship	0	7	4	4	17	32	64
Heavy Cargo	3	2	1	2	2	6	16
General Dry Cargo	111	185	122	98	271	459	1246
Passengers	13	37	15	30	8	32	135
Supply	0	0	0	0	4	8	12
Factory	0	0	1	0	0	2	3
Reefer	5	20	41	105	148	78	397
Livestock Carrier	0	0	0	0	1	5	6
Special Purpose	2	2	6	6	2	21	39
Fishing	1	0	1	2	7	27	38
Container Ship	264	319	181	87	33	42	926
Unspecified Tanker	74	50	32	49	56	37	298
Chemical Tanker	120	39	28	18	30	42	277
Vehicle Carrier	27	7	7	9	23	22	95
Gas Tanker (unspecified)	6	6	4	9	13	29	67
Ore / bulk/ oil	4	15	28	20	18	22	107
Oil tanker	165	43	33	30	38	33	342
Ferry	0	3	1	0	1	2	7
MODU	1	0	0	0	0	0	1
Cargo by Units	1	3	0	2	1	0	7
Others	7	2	3	0	2	17	31
<b>Total</b>	<b>1354</b>	<b>1223</b>	<b>906</b>	<b>678</b>	<b>1311</b>	<b>1384</b>	<b>6856</b>

### Detained Ships sorted by Age and Type

Type	Age (in years)						Total
	0-5	6-10	11-15	16-20	21-25	Over 26	
Bulk Carrier	3	2	4	4	16	29	58
RO-RO Ship	0	1	0	1	0	5	7
Heavy Cargo	0	5	0	1	16	58	80
General Dry Cargo	1	0	0	0	0	1	2
Passengers	0	0	0	0	0	1	1
Supply	0	1	1	0	9	2	13
Factory	0	0	0	0	0	2	2
Reefer	0	0	0	0	2	1	3
Livestock Carrier	0	0	0	0	1	13	14
Special Purpose	0	0	0	0	2	10	12
Fishing	1	5	0	5	0	2	13
Container Ship	0	0	1	1	1	2	5
Unspecified Tanker	0	0	0	1	0	2	3
Chemical Tanker	0	0	0	0	0	2	2
Vehicle Carrier	0	0	0	0	1	1	2
Gas Tanker (unspecified)	2	1	0	0	1	4	8
Ore / bulk/ oil	0	0	0	0	0	1	1
Oil tanker	0	0	0	0	0	3	3
<b>Total</b>	<b>7</b>	<b>15</b>	<b>6</b>	<b>13</b>	<b>49</b>	<b>139</b>	<b>229</b>



## Inspected Ships sorted by Tonnage

Tonnage (in thousands)	Inspections	Detentions	Ratio
0 - 5000	714	87	12.32%
5000 - 10000	905	48	5.30%
10000 - 15000	863	30	3.48%
15000 - 20000	1003	24	2.39%
20000 - 25000	785	17	2.17%
25000 - 30000	774	2	0.26%
30000 - 35000	332	6	1.81%
35000 - 40000	589	9	1.53%
40000 - 45000	345	3	0.87%
45000 - 50000	63	2	3.17%
mayor a 50000	483	1	0.21%
<b>Total</b>	<b>6856</b>	<b>229</b>	<b>1.80%</b>

## Detected Deficiencies

Deficiencies	Number
Food and Catering	60
Accommodations	185
Annex IV - MARPOL.	6
Annex V - MARPOL.	127
Tanker ships	75
Cargo	129
International Statutory Certificates and Ship's Documentation	1765
Communications	749
All Other Deficiencies Clearly posing a risk to safety, public health and the environment	16
MARPOL related Operational Deficiencies.	226
SOLAS related Operational Deficiencies	248
Deficiencies Related to Special Maritime Security Measures	1004
Mooring Arrangements	466
Fire Extinguishing Devices	2599
Life Saving Appliances and Arrangements	2618
Crew Members' Documents	1328
Non-Conformities related to Safety Management Code	1331
Load Lines	2365
Working Spaces	124
Propulsion and Auxiliary Machinery	2832
Additional Measures on Bulk Carriers	152
Special Measures to increase maritime security	372
Navigation	2302
Other Deficiencies Not Clearly posing a risk to safety, public health and the environment	50
Prevention of Accidents	138
Pollution Prevention – Annex I	1819
Pollution Prevention – Annex II	18
Pollution Prevention – Annex III	6
Safety in General	2778
Alarm Signals	108
<b>Total</b>	<b>25996</b>



### Inspections by Classification Society

Classification Society	Inspections
Alfa Register of Shipping	16
American Bureau of Shipping	685
Bulgarski Koraben Registar	25
Bureau Veritas	664
China Classification Society	127
China Corporation Register of Shipping	17
Croatian Register of Shipping	25
DDR Schiffs Revision und Klassifikation	3
Det Norske Veritas	829
Germanischer Lloyd	1123
Hellenic Register of Shipping	22
Honduras International Naval Surveying and Inspection Bureau	1
Indian Register of Shipping	18
International Register of Shipping	10
International Naval Surveys Bureau	4
Isthmus Bureau of Shipping Classification Div.	28
Korean Register of Shipping	130
Lloyd's Register of Shipping	1114
National Shipping Adjusters Inc	4
Ninguna	149
Nippon Kaiji Kyokai	1345
Panama Bureau of Shipping	2
Panama Maritime Documentation Services	15
Panama Maritime Surveyors Bureau Inc	7
Panama Register Corp	17
Polski Rejestr Statkow	30
Register of Shipping (Korea)	2
Registro Cubano de Buques	3
Registro Italiano Navale	173
Registro Naval Roman	3
Russian Maritime Register of Shipping	230
Turkish Lloyd Vakfi	16
Vietnam Register of Shipping (Dan Kiem Viet Nam)	19
<b>Total</b>	<b>6856</b>



## **Statistical Analysis 2007**

### **Inspected Ships sorted by State**

6856 inspections were conducted in 2007 compared to the 6546 in 2006, which shows an increase of 310 inspections.

The detention ratio has also increased if compared to 2006 when 119 ships were detained (1.81%), since in 2007, there were 229 detentions (3.34%).

### **Inspected Ships sorted by Flag**

As last year's figures showed, Panamanian-flagged ships remain at the top of the most inspected ships list with a 23.30%, followed by Liberian ships with 11.14%; Maltese ships with 7.13%, Bahamas with 6.48% and Cypriot ships with 5.56%. Other flags only account for less than an 5%.

### **Detained Ships sorted by Flag**

Flags which suffered more detentions in the region are: Panama 41%, Cyprus 6.08, Lebanon 4.78%, Malta 3.91%, and Venezuela and Vanuatu with 2.17%.

The list of detained ships flying the flag of member States is headed by Panama with 40.61%, Venezuela 3.91%, Honduras 1.30%, and Argentina, Bolivia, Brazil, Colombia, Mexico and Uruguay with a percentage below 1.

### **Inspected Ships sorted by Type**

The bulk carrier is the most inspected ship type with 2742 inspections (39.99%), followed by general dry cargo ships with 1246 (18.17%) and container ships with 926 (13.51%).

### **Inspected Ships sorted by Classification Society**

The inspection ratio is headed by Nippon Kaiji Kyokai with 19.62%, followed by Germanischer Lloyd with 16.38%, and the Lloyd's Register of Shipping with 16.25%.

### **Inspections and Detentions sorted by Age of Ships**

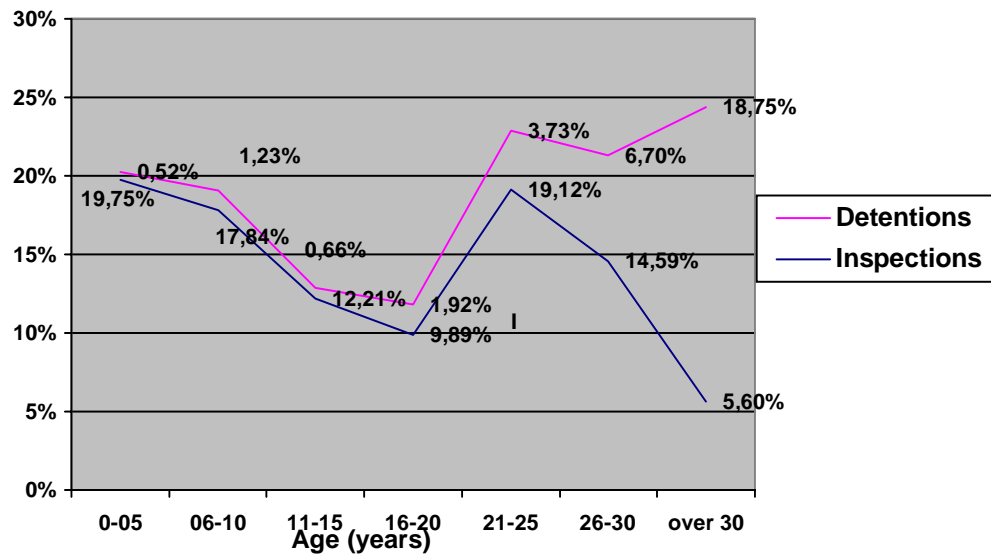
In this table we can see that out of 6856 inspections, 384 (5.60%) were carried out on ships aged over 30 years, representing the smallest amount within all inspected ships.

The most inspected ships according to age are those between 0 and 5 years (19.75%), and between 21 and 25 years (19.12%), and between 6 and 10 (17.84%). The other ones only account for less than a 15%.

We can see that the highest detention rate corresponds to ships over 30 years of age with 72 detentions out of 384 inspections, which accounts for a 18.75%, followed by ships between 26 and 30 years with 67 detentions out of 1000 inspections (6.70%), and ships between 21 and 25 years with 49 detentions out of 1311 inspections (3.73%).



Percentage of detention and inspection ratio as per age of ship



Inspected and Detained Ships sorted by Age and Type

The most inspected ship type is the bulk carrier with 2742 inspections.

If we compare the data regarding detained ships sorted by age and type, the general dry cargo ship is the type that suffered more detentions, with figures increasing in ships aged over 26 years, with a 29 detentions out of 58.

Inspections and Detentions sorted by Size

When analysing these tables, we can see that out of 6856 inspections, 1003 were conducted on ships between 15.000 and 20.000 tons, with 24 detentions out of 229 (14.63%). The segment from 0 to 5.000 tons, with 87 detentions (37.99%).

Deficiencies sorted by Type

In this table, the most common deficiencies are found under the items "Main Propulsion and Auxiliary Machinery with 2832 (10.89%), followed by "Safety in General" with 2778 (10.69%), and "Life-saving Appliances" with 2599 (10%). Each of the remaining items account for less than 9%.

Average detained ship

From the analysis we can conclude that the ship most likely to be detained in the region shows the following characteristics:

It is a ship below 5000 tons, transporting general dry cargo, aged over 26 years, and its deficiencies are mainly found in its machinery, Life-saving appliances and arrangements, and its fire-extinguishing devices.